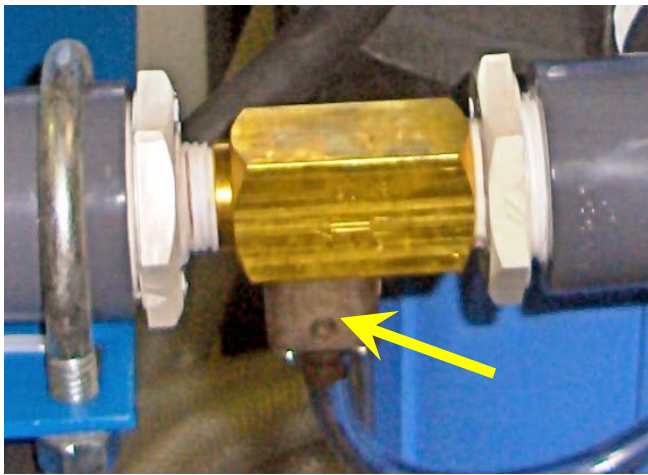


806957A WRS RETROFIT TO REV A, 3/4 NEUTRALIZER INJECTOR KIT

This kit is used to replace the neutralizer pump (PN 5837) used on Sackett WRS systems prior to October, 2005 and to update Sackett WRS systems built between October 2005 and March 2012.

By re-plumbing the WRS system to revision 'A' higher wash spray pressures are achieved and the 110 gallon wash water holding tank is kept clear of particulate. Installation will take approximately two hours.



The injector system allows the rate of neutralizer addition to be controlled so that less overshooting of pH level is experienced. Adjusting the small screw in the center of the injector chemical inlet meters the rate. Turning the screw clockwise reduces the rate and counter clockwise increases it. With the screw turned fully clockwise, for minimum flow, the range of adjustment is five turns counterclockwise, where maximum flow will occur. The injector can draw neutralizer in its undiluted form, so the siphon tube can be placed directly in PN's 8045 (1 gallon) and 8054 (5 gallon) containers.

Refer to the following Bill of Material and print B801639B Rev. A for installation. Use the #18 nozzle bushing in the injector. The neutralizer supply can be placed on the floor, use tubing 4753 and siphon tube A806793 to bring neutralizer to the inlet of the solenoid valve. If updating a pump system, the solenoid gets wired to the same terminals that the motor used, O002 (located on a fuse block) and 2, and will be energized when the pH falls below 7.

Part #	Description	QTY	UM
3675	TUBE BARB, 1/4" I.D. x 1/4 NPT(M) B	1	EA
	Neutralizer solenoid inlet from siphon tube		
3675A	TUBE BARB, 3/8" I.D. x 1/4 NPT(M) B	1	EA
	Neutralizer solenoid outlet to injector		
4581	INJECTOR 3/4NPT(F)IN x 3/4NPT(M)OUT	1	EA
	Use #18 nozzle bushing		
4661	TEE 1 NPT THREADED PVC SCH 80	1	EA
	Use to install WRS filter back pressure gauge		
4667	TUBE BARB, 1" I.D. x 1NPT(M) NYLON	3	EA
4710	HOSE PVC CLEAR 1 IN ID 5238K68 100'	8	FT
4718	REDUCING BUSHING PVC 1 X 3/4 439-1	2	EA
	Inlet/Outlet of Injector		
4725	PIPE NIPPLE 3/4 X CLOSE PVC 883-00	1	EA
	Injector Inlet		
4752-30	GAUGE PRESSURE 0-30 PSI	1	EA
	WRS filter backpressure gauge (change filters when pressure gets to 15psi)		
4753	TUBING 3/16 ID 3/8 OD PVC CLEAR 523	48	IN
	Neutralizer siphon tube to solenoid		
4782	REDUCING BUSHING 1-1/2 X 1 PVC 839	1	EA
	Use to install WRS filter back pressure gauge		
4784	NIPPLE, 1NPT SHORT PVC	1	EA
	Use to install WRS filter back pressure gauge		
4833	REDUCING BUSH 1/2X1/4 PVC ESLON 4	1	EA
	Use to install WRS filter back pressure gauge		
4834	BUSHING 1 NPT x 1/2 NPT THREADED PV	1	EA
	Use to install WRS filter back pressure gauge		
8377	VLV 2WAY NormClosed 115VAC 1/4NPT(F	1	EA
	Neutralizer solenoid		
8942	COUPLING, 1 NPT THREADED PVC SCHEDU	1	EA
	Injector outlet		
A806793	SIPHON TUBE, WRS NEUTRALIZER 1/4OD	1	EA

SERVICING:

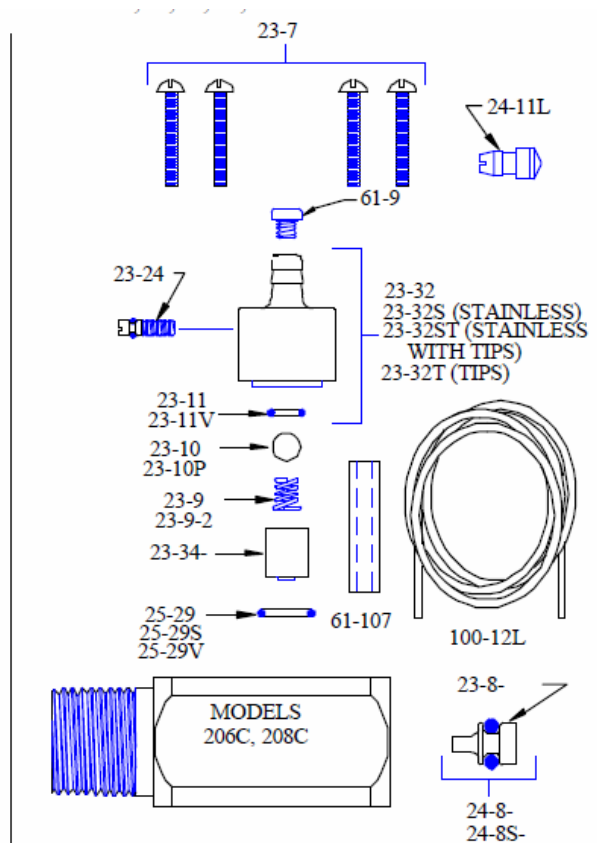
A. If the injector fails to draw chemical in the initial installation:

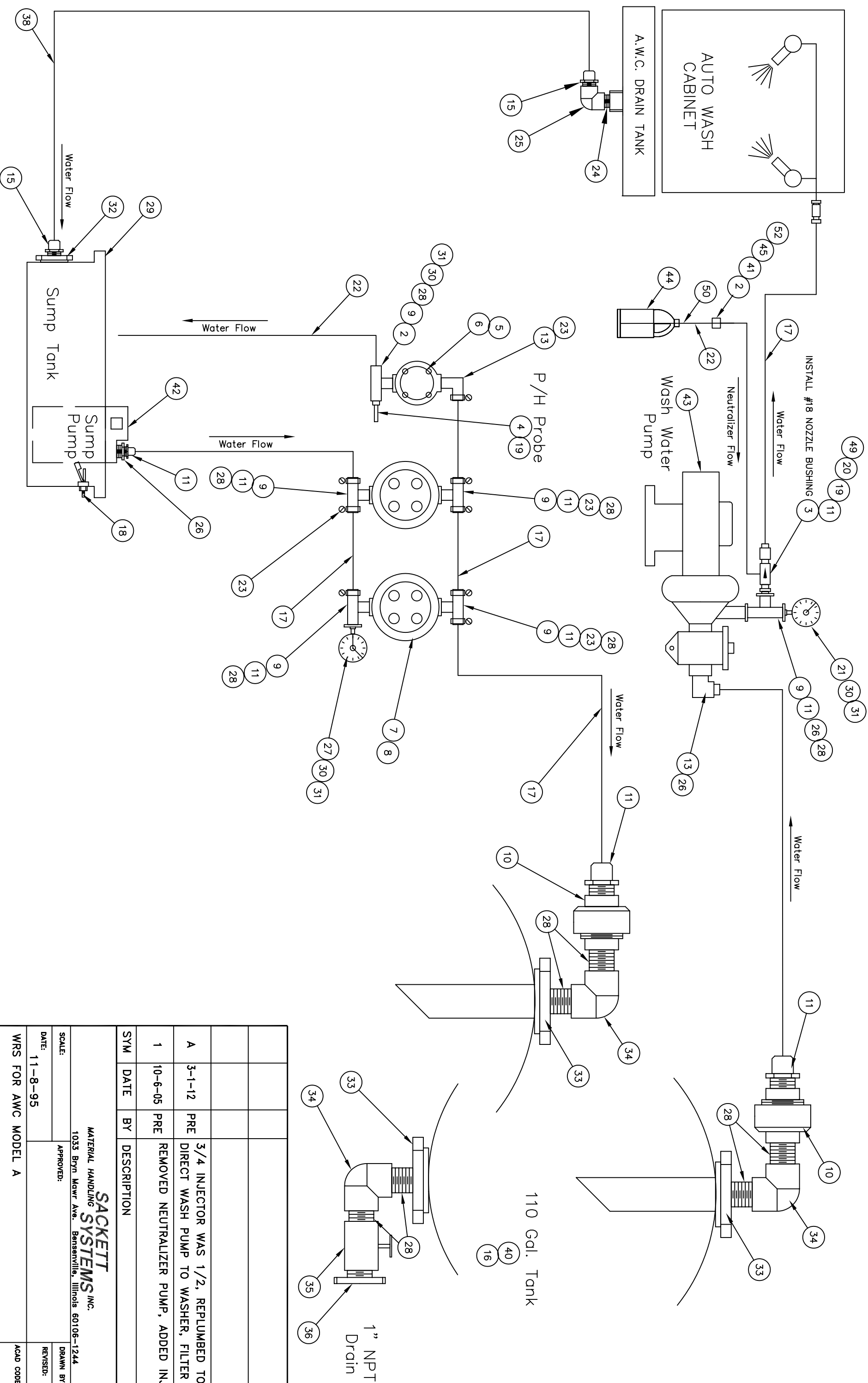
1. Is the injector body installed with the arrow on the side in the direction of water flow?
2. Is the #18 nozzle bushing installed in the inlet end of injector body.
3. Is the chemical metering screw backed off?
4. Are the spray nozzles clogged, hose kinked, or is there some other obstruction in the water line?
5. Is the water temperature too high? 180°F is the highest allowable and injection will fall from maximum as temperature rises above 140°F.

B. If the injector stops operating after having worked properly:

1. See A-4 above. Clean or remove obstructions.
2. Is the foot strainer clogged? Lift tube from drum and clean.
3. Is the check valve clogged? Remove the 4 knob screws to disassemble. Inspect and clean ball, spring, and O-ring.
4. Has the water nozzle bushing become clogged or blown back out? If water is dirty replace the filters ahead of the injector.
5. Are there lime deposits in the throat of the injector? Certain chemicals can cause precipitation in the throat of the injector. Let the injector draw in a small quantity of a de-liming agent (mild acid) to remove the deposit. If deposits are so heavy that injection has ceased it may be necessary to remove the injector body from the line and soak it. Should liming be recurrent, periodic maintenance is indicated

23-7	Screw, 8-32 x 7/8"
23-24	Metering Screw
61-9	Metering Tip, NOT USED
24-11L	Foot Strainer
23-11	Check Valve O-Ring
23-10	Check Valve Ball
23-9	Check Valve Spring
23-34	Check Valve Core
25-29	Metering Knob O-Ring
23-8-18	#18 Water Nozzle Bushing
100-12L	3/8" I.D. Tubing (run from injector to injector solenoid)





SYM	DATE	BY	DESCRIPTION
A	3-1-12	PRE	3/4 INJECTOR WAS 1/2, REPLUMBED TO RUN DIRECT WASH PUMP TO WASHER, FILTER SUMP
1	10-6-05	PRE	REMOVED NEUTRALIZER PUMP, ADDED INJECTOR

SYM	DATE	BY	DESCRIPTION
SACKETT MATERIAL HANDLING SYSTEMS INC. 1033 Bryn Mawr Ave. Bensenville, Illinois 60106-1244			
SCALE:		APPROVED:	
DATE: 11-8-95		DRAWN BY: PRE	
WRS FOR AWC MODEL A		REVISED:	
		ACAD CODE:	
		DRAWING NUMBER: B801639B	

Part #:B801639B As of 04/11/2012 1 levels Active: 03/01/20 Inactive: / /
12

Rev: A Description:ASSEMBLY, WRS WITH SUMP TANK (FOR AWC) FG #: B801639B BRINDENT

Notes:

1234567890123456789012345	Description	Find	Quantity	UM
3044	U-BOLT 1-1/2" PIPE W/NUTS STEEL ZC	01	1.000	EA
3675	TUBE BARB, 1/4" I.D. x 1/4 NPT(M)	B 02	2.000	EA
	Neutralizer solenoid inlet from siphon tube			
3675A	TUBE BARB, 3/8" I.D. x 1/4 NPT(M)	B 52	1.000	EA
	Neutralizer solenoid outlet to injector			
4581	INJECTOR 3/4NPT(F)IN x 3/4NPT(M)OUT	03	1.000	EA
	Use #18 nozzle bushing			
4592	PH ELECTRODE 100ohm Pt RTD ATC 10'C	04	1.000	EA
4594	HOUSING, CARBON FILTER 3/4 NPT(FBE)	05	1.000	EA
4611	FILTER ELEMENT ACT CARBON	06	1.000	EA
4659	HOUSING, FILTER PARTICAL 1 NPT(FBE)	07	2.000	EA
4660	FILTER ELEMENT 30 MIC PARTICLE	08	2.000	EA
4661	TEE 1 NPT THREADED PVC SCH 80	09	3.000	EA
4666	PIPE UNION 1 NPT SCH 80 MC MASTER	10	2.000	EA
4667	TUBE BARB, 1" I.D. x 1NPT(M) NYLON	11	5.000	EA
4669	HOSE BARB 90 L 1HX1NPTE NYL #5372K3	13	1.000	EA
4688	HOSE BARB STR 1-1/2H X 1-1/2NPTE NY	15	2.000	EA
4709	TIE DOWN LIFT-RELEASE MC MASTER	8 16	2.000	EA
4710	HOSE PVC CLEAR 1 IN ID 5238K68 100'	17	8.000	FT
4716	SWITCH, LIQUID LEVEL POLYPROPYLENE	18	1.000	EA
4718	REDUCING BUSHING PVC 1 X 3/4 439-1	19	4.000	EA
4725	PIPE NIPPLE 3/4 X CLOSE PVC 883-00	20	1.000	EA
4752	GAUGE PRESSURE 0-60 PSI	21	1.000	EA
	WRS spray pressure gauge			
4752-30	GAUGE PRESSURE 0-30 PSI	27	1.000	EA
	WRS filter backpressure gauge (change filters when pressure gets to 15psi)			
4753	TUBING 3/16 ID 3/8 OD PVC CLEAR 523	22	48.000	IN
4761	HOSE CLAMP BREEZE #64020	23	15.000	EA
4766	PIPE NIPPLE PVC 1-1/2 X CLOSE	48 24	1.000	EA
4767	PIPE ELBOW 90 1-1/2 PVC MC MASTER	25	1.000	EA
4782	REDUCING BUSHING 1-1/2 X 1 PVC 839	26	2.000	EA
4784	NIPPLE, 1NPT SHORT PVC	28	7.000	EA
4806	TANK 24 X 12 X 12 PLASTIC 3754K74 (29	1.000	EA
4833	REDUCING BUSH 1/2X1/4 PVC ESLON	4 30	3.000	EA
4834	BUSHING 1 NPT x 1/2 NPT THREADED PV	31	3.000	EA
4848	TANK BULKHD 1-1/2 NPT PVC 36895K1	32	1.000	EA
4904	FITTING BULKHEAD 1NPTX1NPT PVC	368 33	3.000	EA
4905	ELBOW, 90 1 NPT PVC	34	3.000	EA
4907	VALVE BALL PVC 1 NPT	NEW 35	1.000	EA
4908	PLUG PIPE PVC 1 NPT	36	1.000	EA
5044	HOSE GREEN 1-1/2ID X 1-3/4OD 5293K4	38	8.000	FT
5193	U BOLT 1 PIPE 1/4-20 3043T18	39	3.000	EA
5788	TANK 110 GAL WITH LID HORIZ :NOTE	40	1.000	EA
6246	NIPPLE INSULATED 1/2" CONDUIT (APPL	41	1.000	EA

Part #:B801639B As of 04/11/2012 1 levels Active: 03/01/20 Inactive: / /
12

Rev: A Description:ASSEMBLY, WRS WITH SUMP TANK (FOR AWC) FG #: B801639B BRINDENT

Notes:

1234567890123456789012345	Description	Find	Quantity	UM
6353A	SUMP PUMP 1/4 HP ROBUSTA 100 W/TS	42	1.000	EA
6354	PUMP W/STRAINER 3/4 HP	43	1.000	EA
8045	NEUTRALIZER FOR WRS 1 GAL QUICK 5	44	1.000	GL
8054	NEUTRALIZER FOR WRS 5 GAL 510160-00	44	0.000	EA
	Reference only for 5 gallon reorder, not included			
8377	VLV 2WAY NormClosed 115VAC 1/4NPT(F	45	1.000	EA
8467	LABEL "NEUTRALIZED WASH WATER" CLEA	46	1.000	EA
8468	LABEL "NEUTRALIZER PH 10-11" WHITE/	47	1.000	EA
8942	COUPLING, 1 NPT THREADED PVC SCHEDU	49	1.000	EA
A806793	SIPHON TUBE, WRS NEUTRALIZER 1/4OD	50	1.000	EA
C801638E (P)	WRS PUMP FRAME WELDMENT (WR OR MODE	51	1.000	EA
C801849 (P)	WRS TANK SUPPORT FRAME	52	1.000	EA